



Sun Valley Parks and Trails

Team Members:

-Mike Ascione

-Arnaldo Gomez

-Victor Castillo

-Masao Ota



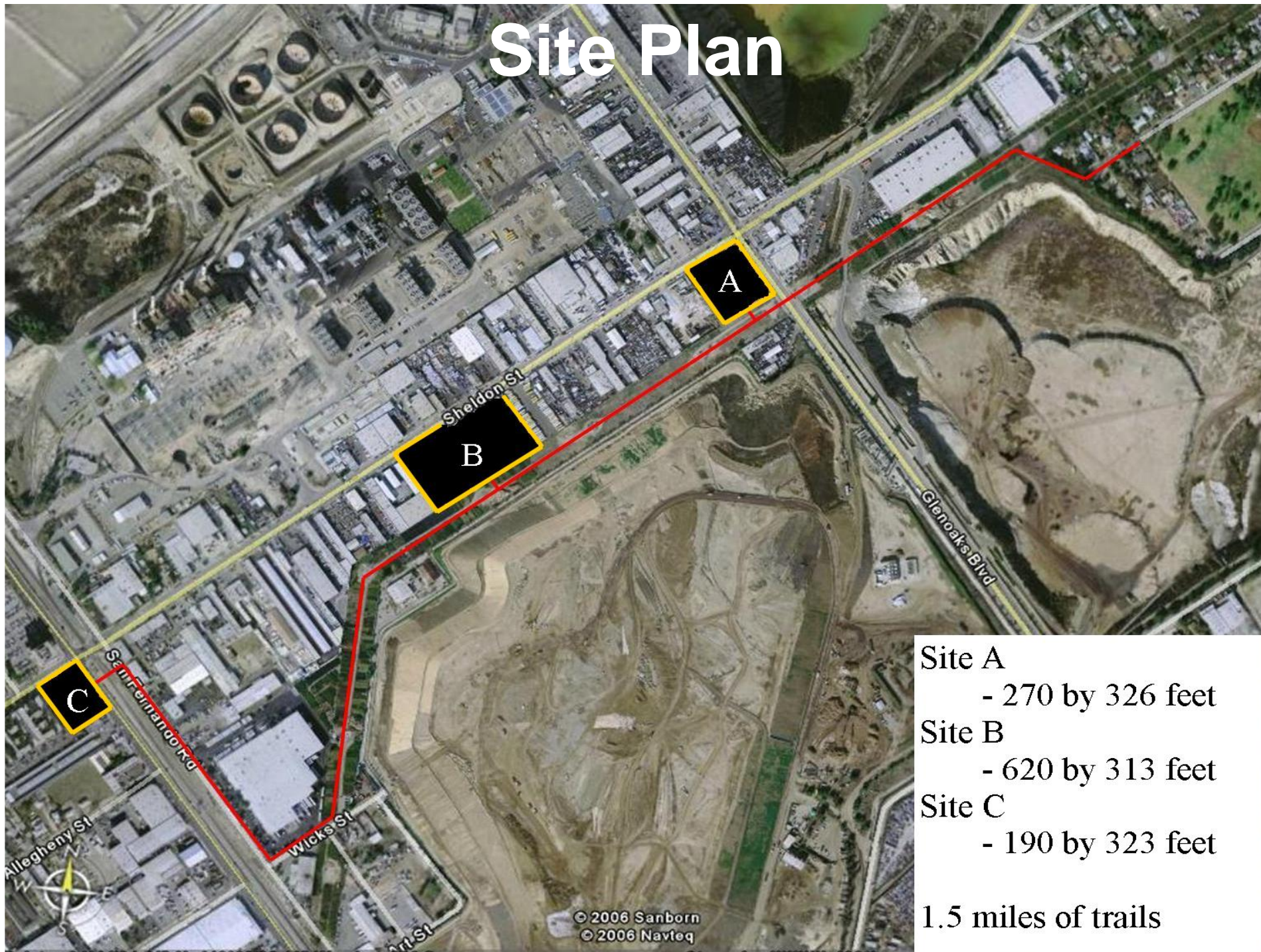


Mission Statement

Here at Restoring Greenspace Planners Inc. it is our mission to improve the “sense of community” of great neighborhoods. We believe that a community with usable open space is one that people love and take pride in. Through design and innovation we bring people outdoors to enjoyable places.



Site Plan



- Site A
 - 270 by 326 feet
- Site B
 - 620 by 313 feet
- Site C
 - 190 by 323 feet

1.5 miles of trails



Existing Conditions



Figure 1: Site A



Figure 2: Site B



The four figures shown tied into a sitemap of the project area shows the lack of greenery within the area.



Figure 3: Site C



Figure 4: Trails

Sun Valley Parks



Existing Conditions

Quantitative

Site A

- Location- 9723 Glenoaks Blvd
- Boundaries- 270 by 326 feet, square shape, on the corner of Glenoaks Blvd. and Sheldon Street.
- Current Use- Writeway Charity
- Zoning- (T)M2-1
- Habitation/ Species/ Native plants- location is all urban construction materials, nothing is natural in its surrounding.

Site B

- Location- 11720 Sheldon Street
- Boundaries- 620 by 313 feet, square shape, between Sheldon and walking trail.
- Current Use- Angelus Block Co., Inc.
- Zoning- M2-1
- Habitation/ Species/ Native plants- location is all urban construction materials, nothing is natural in its surrounding.

Site C

- Location- 12010 Sheldon Street.
- Boundaries- 190 by 323 feet, square shape, on the corner of San Fernando and Sheldon Street.
- Current Use- Sun Valley Auto Sales
- Zoning- C2-1VL
- Habitation/ Species/ Native plants- location is all urban construction materials, nothing is natural in its surrounding.

Trail

- Location- Beginning from park connects to the open space on train tracks, and ends on the corner of San Fernando and Sheldon Street.
- Boundaries- 1.5 miles, rectangle shape.
- Current Use- Power line, plant nurseries, and truck parking.
- Zoning- PF-1XL
- Habitation/ Species/ Native plants- Open fields of dried grass and dirt paths.



Existing Conditions

Qualitative

Access

- Major street are Sheldon Street, San Fernando Road, and Glenoaks Blvd.

Transportation

- Glenoaks Blvd. & Sheldon St. - 92 & 166. San Fernando Road & Sheldon. - 94 & 394, Sheldon Street has no bus line.
- Automobiles use Sheldon Street, San Fernando Road, and Glenoaks Bl. For traffic flow.

Noise Level

- High, due to trucks and train.
- Residences can hear street traffic in their home.

Climate and Terrain

- The San Fernando Valley is surrounded by mountains and has direct access to the ocean. The average temperature ranging from 50 degrees to 80 degrees, and temperature climate makes are year-round.

Surface

- Built concrete and/or tar.

Circulation

- Day Time: High volume of truck traffic.
- Night: Light traffic



Site A Proposal



Pond



Gazebo



Creek



Drought resistant landscape



Walking paths



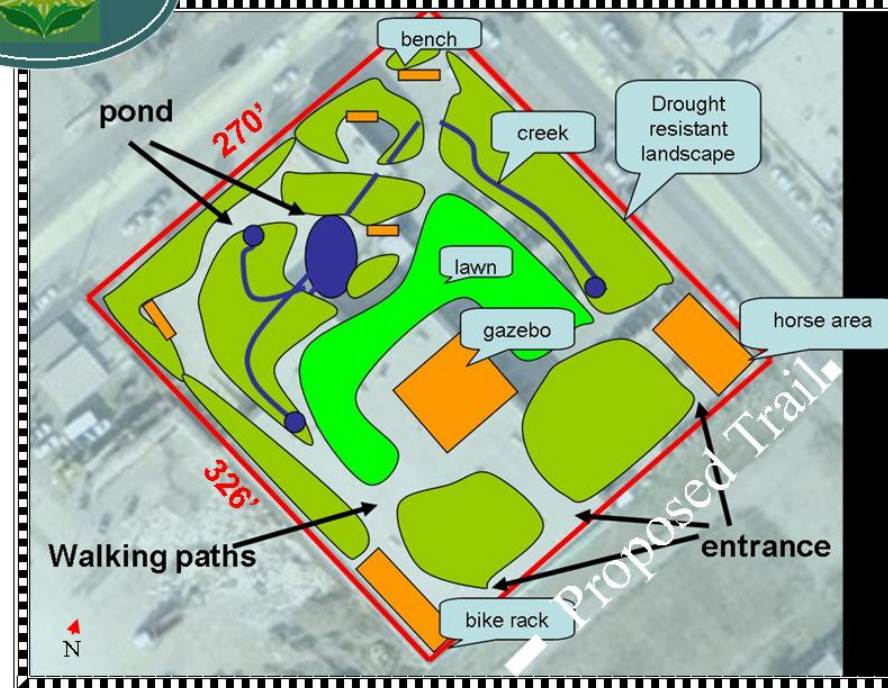
Sitting area



Horse area



Bike rack



- Drought resistant landscape mainly to conserve resources
Great for low precipitation Southern California
- Pond/fountains and small creeks use reclaimed water
Pleasant to visitors
- Walking paths
Landscape invites people to walk
- Gazebo with BBQ equipment
Welcomes recreation and events
- Sitting areas
Rest areas allow to soak in the environment
- Horse and bicycle areas
Secure bike and horse area



Site A continued



Site A: Perimeter Designs



Building materials used as a buffer for site perimeters-

Can be used as part of the landscape to protect the park from industrial and traffic noise while containing visual beauty. Also serves as a safety factor to keep kids away from the busy streets



Site B Proposal



Open Space



Vending Machine



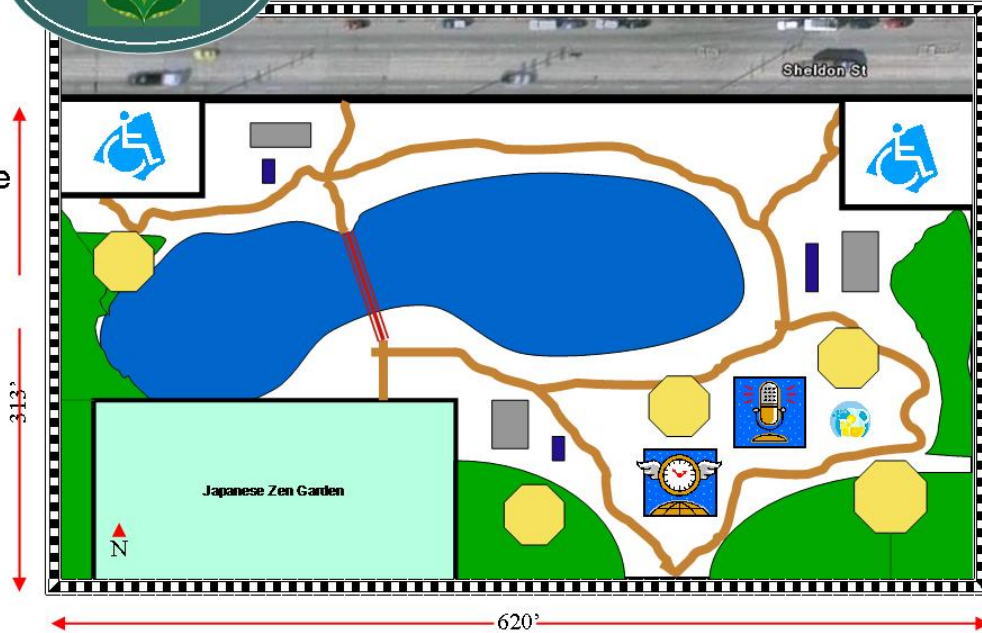
Handicap Parking



Restroom




Bicycle Rack




- Site B is located in between section A and C.
- Site B provides green space, open space, and Japanese Zen Garden.
- Parking spaces are limited only to the handicap.
- Vending machines supply refreshments for park users.
- Restrooms have a Japanese style design.
- The concept of Japanese Zen Garden is supplying a place for meditation for the neighborhoods.
- Azumaya (Rest Area) provides a resting place for park users and shaded areas.
- Clock Tower is a landmark of the park.




Site B continued

 Japanese Zen Garden



 Azumaya (Rest Area)



 Clock Tower



 Pond



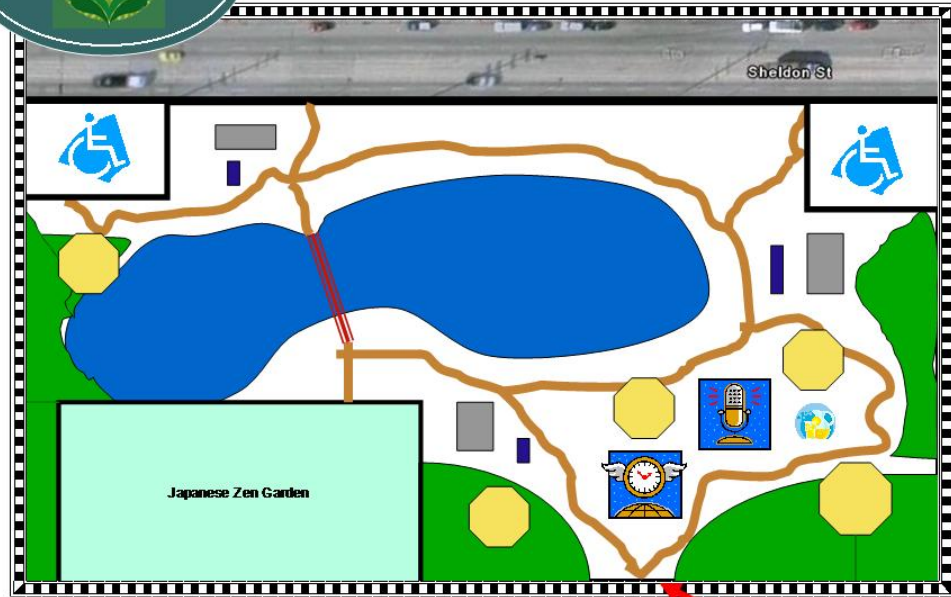
 Tree



 Bridge



 Trail



 Trail System Connection



Site C Proposal



Oak Benches



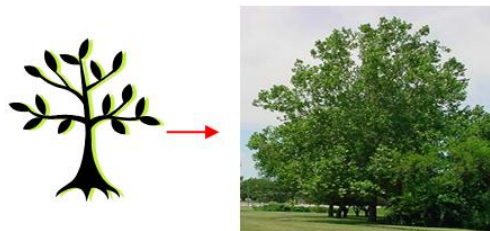
Hedge



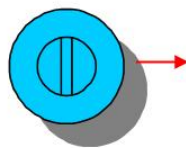
Bathroom



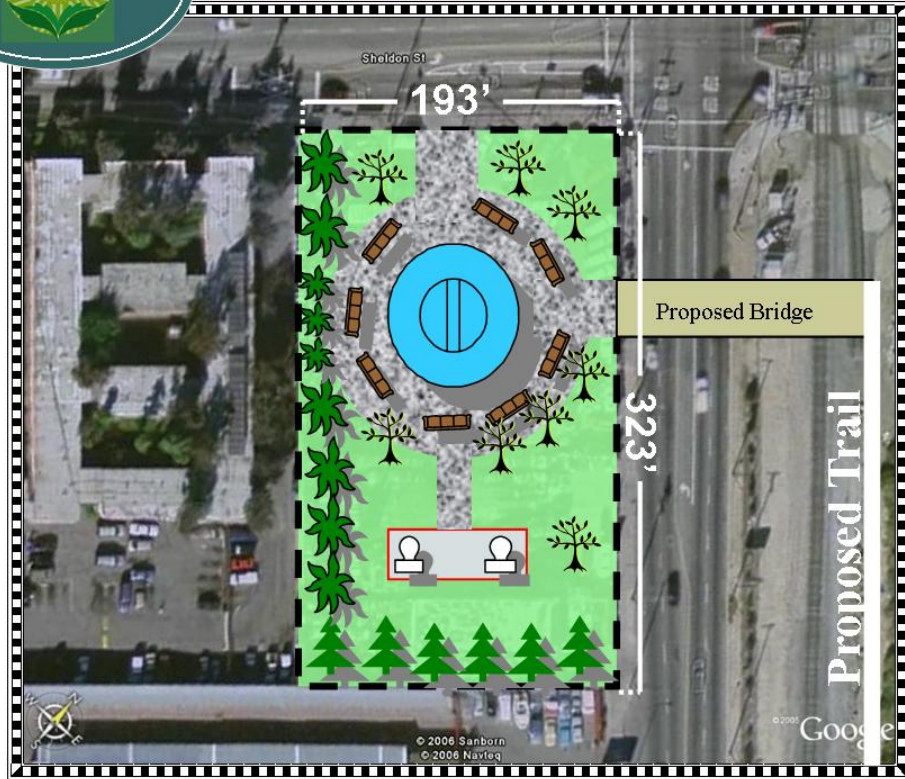
Pine Trees



Sycamore Trees



Fountain



Site C Plan

Designed with the hospital in mind. We believe that this parks design will help contribute to the healing process of hospital visitors. The park contains a fountain and sitting area located under big trees. This area will bring life to its visitors on a daily basis. This park is the starting point of the trail system on the south side of the valley and is easily accessible to its residents located nearby.



Trail System



Trail



Trail



Bridge

